



TNTY Game Technologies

EXPERIENCE **THE TECHNOLOGY**

- 4 SPLASH CABIN
- 6 VR SPLASH CABIN
- 8 SPLASH VR
- 11 SLIDE 'N SCORE
- 12 SLIDE 'N ROLL / LED WATERSLIDES
- 13 VR WATERSLIDE SIMULATORS
- 14 SPLASH CINEMA
- 15 INTERACTIVE DARK RIVERS
- 16 SPLASH BATTLE
- 17 SLIDE'N TOUCH
- 18 SPLASH BUCKET
- 20 ELECTRONIC ACCESSORIES
- 25 MOTION SENSITIVE AUGMENTED REALITY WATERSLIDES
- 26 ROCKET LAUNCHERS
- 27 PARK MISSION GAMES
- 28 OCEAN DRIVE SIMULATORS
- 29 SUBMARINE SIMULATORS
- 30 ABOUT US



EXPERIENCE THE TECHNOLOGY

**EXPERIENCE A NEW REALITY
THAT IS BEYOND YOUR IMAGINATION**

TNTY Waterparks, a global market leader in the waterpark industry, is proud to present TNTY Game Technologies: The new division integrates technology, gaming and interactivity into the waterpark experience to deliver a new and unique experience for waterpark guests unlike any water attraction ever before while simultaneously attracting a wider audience of guests to waterparks.

The TNTY Game Technologies Division of TNTY Waterparks focuses exclusively on creating new concepts and technologies by strategically combining the experience of our own highly skilled R&D engineers with those of other critical sectors — including some of the most well-known companies in their fields. Combine that proficiency with our 40 years of dependable, trustworthy expertise, and our customers now benefit from the development of some of today's most unique gaming, interactive and technology-integrated products. Browse the many offerings in our catalog and discover the exciting new offerings available that will keep guests coming back again and again. You'll be surprised with what we have in store.

GameTechnologies

SPLASH CABIN



Putting a creative, wet new edge on the world of gaming!

Our Splash Cabin is a uniquely interactive game that allows two players to engage in a fun, water-fueled battle with animated competitors using an interactive screen. Its unique system, compatible with many theming opportunities.

Guests engage onscreen competitors from inside a cabin — or beach bungalow — attempting to score points by hitting moving targets while also avoiding being hit themselves by waterjets shooting from nozzles embedded on the screen. Players collect points for each target they hit. At the end of the game, the loser faces a surprise water splash.



IAAPA

2017 Brass Ring
Winner



MVP
2018
MOST VALUABLE PRODUCTS

HIGHLIGHTED FEATURES

- More fun and excitement than similar 3D shooting games
- The ability for two guests to play simultaneously
- A realistic 3D experience produced by two LED projectors
- 2 robust water shooters designed to deliver long, problem-free user time
- Requirement of only one computer with plug-and-play architecture for game control
- Multiple responsive water nozzles embedded in the interactive screen
- Computer-controlled electronic water valves
- A high-pressure water pump
- 2-minute-maximum game duration
- Waterproof equipment inside the splash zone
- The option to play without water features
- 2 types of unique cabin designs
- Social-media integration
- The possibility of indoor and outdoor versions (also inside Water Play Structure pools)
- Availability of different cabin theming
- Availability of different game scenarios and IPs.





VR SPLASH CABIN

VR Splash Cabin” Fully Immerses Guests into Gaming Experience

Giving parks options is the name of the game as Polin Waterparks in cooperation with Lagotronics introduces a second enhanced version of its new Splash Cabin, this one using VR technology.

Polin Waterparks (Turkey) & Lagotronics (Netherlands) are taking the experience to the next level with the new “Virtual-Reality Splash Cabin” aquatic attraction.



Using the latest technology in VR goggles, along with handheld shooters, guests will enter an otherworldly environment in which they will feel they are floating along streams and through villages on a remote island. As they encounter a variety of different situations, they will participate in the greatest water battle of their lives, competing against other players to earn points and “stay alive.”

It will be unveiled, pushing the envelope by using VR glasses and handheld water shooters. For smaller parks, the VR Splash Cabin covers a smaller footprint compared to its 3D Splash Cabin cousin. The VR version requires a space of 3.8 meters long x 3.6 meters wide of space (12.5 feet long x 12 feet wide).

The VR version creates a full 360-degree experience using the highest-resolution virtual-reality equipment on the market. Players will experience being “inside the game” while defending themselves using fully robust and durable water shooters. Players will be doused with water splashes - controlled by Polin’s system - according to their game play.





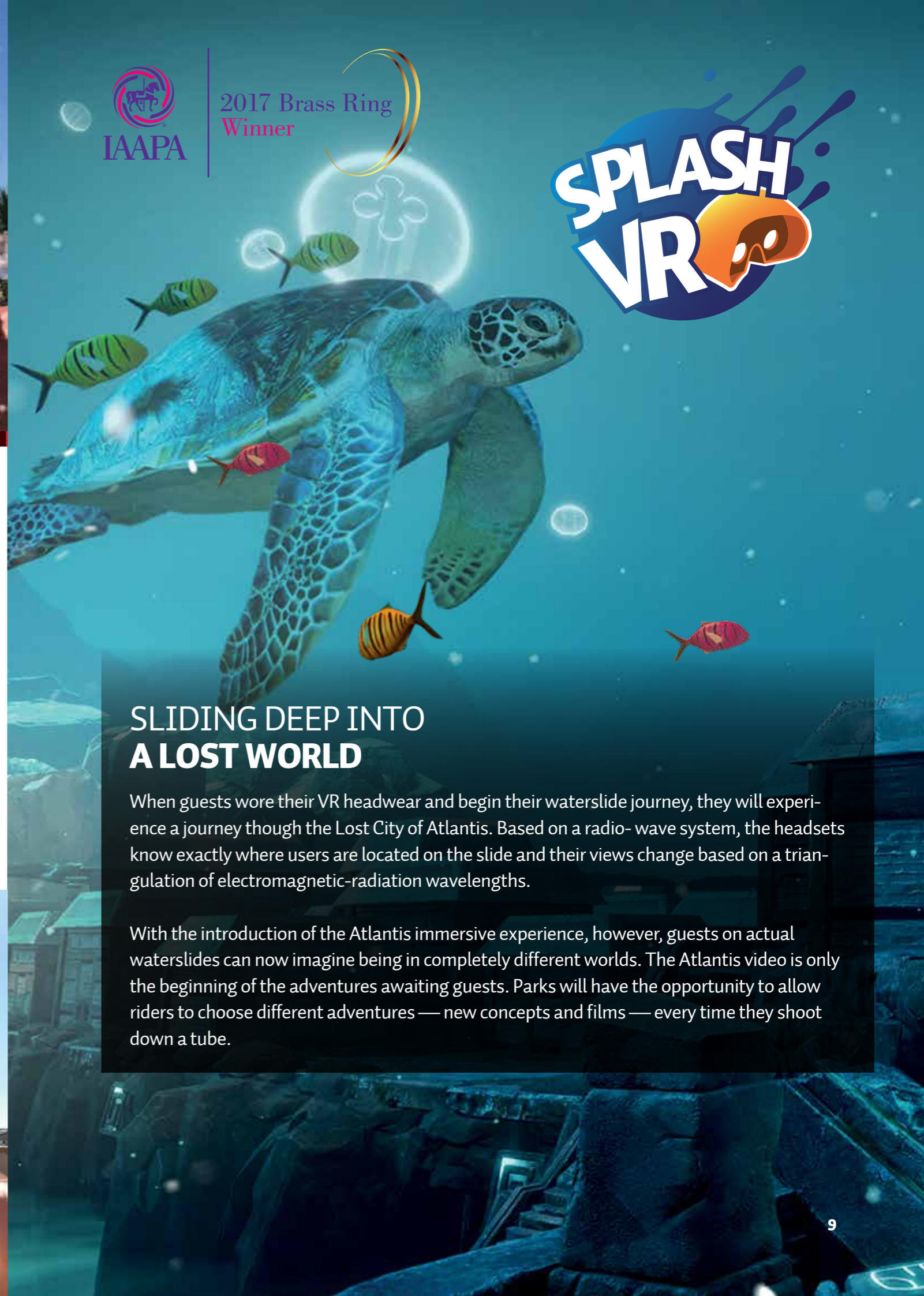
SPLASH VR

VIRTUAL REALITY EXPERIENCE IN THE WORLD OF WATERPARKS

“Splash VR”, the first technology solution that deploys a virtual-reality experience for waterpark guests without impacting the structure of existing waterslides.

VR WATERSLIDE TECHNOLOGY PROVIDES:

- Based on a local slider’s GPS (SPS) system (Slider Positioning System)
- A full 360-degree experience of varying scenarios throughout each ride
- A user-friendly interface that allows guests to select desired interactions
- A synchronized VR display that can begin the ride displaying “real-life” images and then transition to a completely animated experience
- Unlimited scenario options including falling from a waterfall; traveling through dinosaur eras, space or other futuristic times; horror-action experiences; and licensed character themes for kids.



2017 Brass Ring Winner



SLIDING DEEP INTO A LOST WORLD

When guests wore their VR headwear and begin their waterslide journey, they will experience a journey through the Lost City of Atlantis. Based on a radio-wave system, the headsets know exactly where users are located on the slide and their views change based on a triangulation of electromagnetic-radiation wavelengths.

With the introduction of the Atlantis immersive experience, however, guests on actual waterslides can now imagine being in completely different worlds. The Atlantis video is only the beginning of the adventures awaiting guests. Parks will have the opportunity to allow riders to choose different adventures — new concepts and films — every time they shoot down a tube.



MAINTANENCE / YEAR

A REMOTE DIAGNOSTICS

Helmets are actually equipped with a system remote control. As soon as they connect to wifi network, we have access to a smartphone integrated in the helmets. Then we can check the functioning and diagnose the potential problems.

- Tracking system tests
- Battery tests
- Access to statistics
- Possibility to update a new 360° movie.

PRODUCTION LEAD-TIME

2 months for the manufacture of helmets

2-3 months for the production of the movie 360°

2 days on-site for testing & adjusting the movie preview

2 days for the installation and configuration

ONE VISIT IN SITU (Two days before the start of the season)*

- Control of the main key points of the system (Anchors - Helmets - Monitoring System)
- Simple repair of the helmets (Electronic part not included)

The replacement of 5 damages helmets.

* Excluding transportation and accommodation costs

OUR NEEDS TO WORK TOGETHER

To produce the best attraction ever, we will need some documents from you:

- Several videos of the Waterslide with the first person view (min/max person in the buoy) The plans
- and technical characteristics of the waterslide (duration, speed, curve)
- The choice of licence: Atlantis or Rabbids

The future of adrenaline-soaring gaming is now here!

Guests collect a remote controller from a kiosk and log in before entering the ride, choosing one of five difficulty levels. Strapping the unit onto an arm and slipping controllers over their fingers, players have access to multiple buttons that match LED-illuminated targets within the ride. As guests shoot through the waterslide – which can be either body slides or tube slides — they collect points by pushing the button that matches each target at precise points while sliding past.

At the end of each sliding session, guests can observe their score on screens positioned in the landing area.

ADVANTAGES

- Easy to play
- No complicated instructions necessary
- Guests not required to carry heavy boards or rafts due to the option for installation within standard tube slides
- Accurate positioning system without use of RFID tags
- Social media integration



The Light Effects Can Be of Any Theme, Stripes, Dots or Any Design



SLIDE 'N ROLL

Taking gaming to new levels of adrenaline

This new offering combines all of Polin's exclusive technologies — unique sound, lighting and design special effects — into one slide. The result is an experience that delivers a full range of sensory stimuli for guests.

- ⊗ Combines exclusive sound, design and light effects
- ⊗ Full sensory stimuli
- ⊗ Special effects impact guests throughout entire slide experience
- ⊗ Latest innovation technologies
- ⊗ Ease of operation and maintenance
- ⊗ Sound effects available
- ⊗ Endless theming possibilities
- ⊗ Fluorescent effect with special high-tech resin.



VR WATERSLIDE SIMULATORS

Driving adrenaline levels and gaming to futuristic levels!

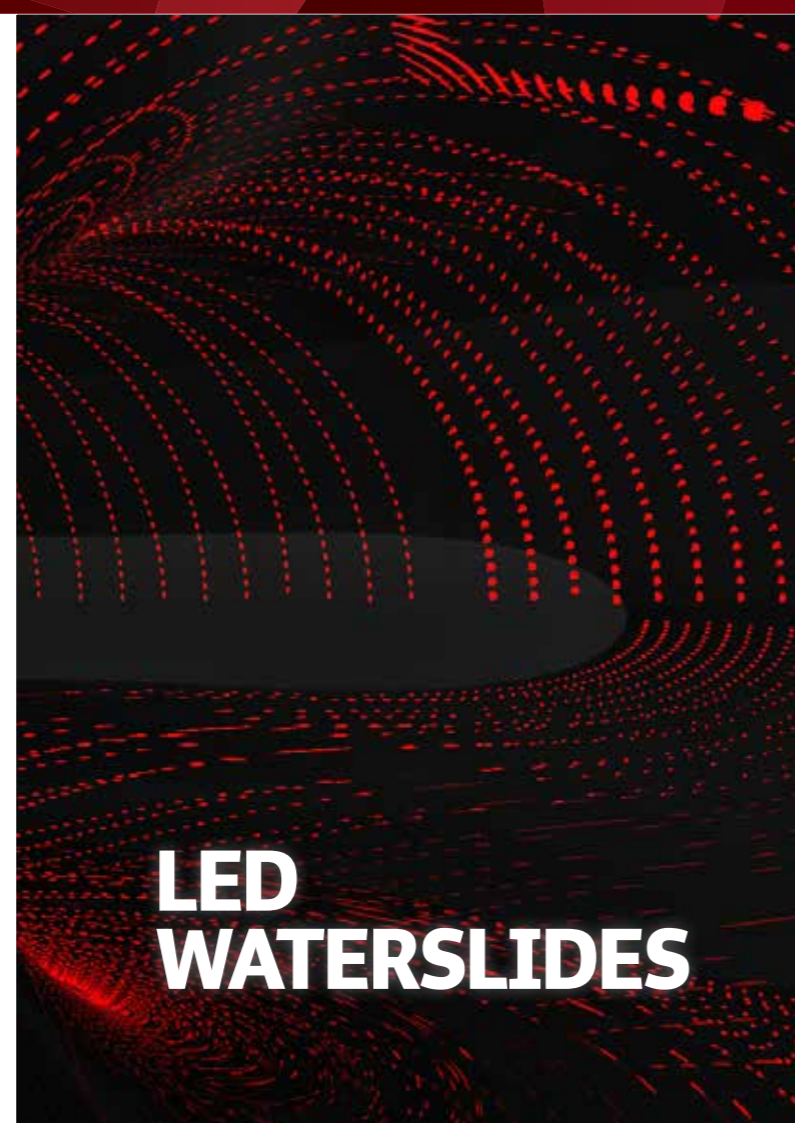
Virtual-reality waterslide simulators combine the stimulation of a real-life sliding experience with the world of animation. First in the industry!

HIGHLIGHTED FEATURES

- ⊗ A full 360-degree experience of varying scenarios throughout each ride
- ⊗ Ability of guests to select their desired interaction via a user-friendly interface
- ⊗ Use of Polin's splash- and dust-proof wireless VR glasses
- ⊗ A synchronized VR display that can begin the ride displaying "real-life" images and then transition to a completely animated experience
- ⊗ Unlimited scenario options including falling from a waterfall; traveling through dinosaur eras, space or other futuristic times; horror-action experiences; and licensed-character themes for kids
- ⊗ Options for guests to choose a difference experience for every ride

Polin's wide variety of LED illumination options can be installed on waterslides and include features such as:

- ⊗ Differing shape options, including strips, small panels and large panels
- ⊗ Various color options
- ⊗ Fluctuating shapes and sequences
- ⊗ Ability to control lamps via sensors to deliver a more interactive sliding experience
- ⊗ Supported by Polin's 35-year-old translucency technology



LED WATERSLIDES





SPLASH CINEMA

Splash Cinema is the ultimate multi-dimensional cinema experience for waterparks. The attraction enables guests to undergo an exciting 5D experience by incorporating seats on a motion base that have been enhanced for optimal operation in totally wet environments. Magic fountains, water guns, rain and flat-water jets fully involve guests in the cinematic adventure.

Additional special effects — such as strobe lights, wind, fog, lasers and other unique lighting techniques — directly immerse guests, taking them from simply watching a film into experiencing an unforgettable, wet and splashy adventure.

Splash Cinema provides high-tech movie machinery, including 3D HD projection, silver screens, professional audio systems and a state-of-the-art HD 3D server that features a movie-licensing system for secured film titles.

Splash Cinema is the perfect attraction for waterparks that want to offer guests a truly unique aquatic highlight.



INTERACTIVE DARK RIVERS

TNTY's Interactive Dark River is a unique product combining a lazy river and a dark ride experience with mounted targets guests can shoot at to score points.

HIGHLIGHTED FEATURES

- 🎯 A fully customizable interactive controller is mounted inside the tube
- 🎯 An unlimited number of targets can be installed throughout the ride
- 🎯 Targets can change colors throughout the ride
- 🎯 Special effects, lights, audio and video display when a target is hit
- 🎯 A points system awards players based on accuracy in hitting targets
- 🎯 A variety of gaming modes is available
- 🎯 A scoring monitor at the end of ride displays each guest's personal score
- 🎯 Social media integration





SPLASH BATTLE

This river ride takes guests on a journey that is suitable for all waterparks and theme parks.

HIGHLIGHTED FEATURES

- ⊗ More interactive than the other river rides
- ⊗ Various kinds of splash toys, including water guns, water cannons, air-actuated geysers, etc.
- ⊗ The option to play water shooting games where players collect points when hitting targets
- ⊗ Special theming options
- ⊗ Alternatives for various audio-visual effects



SLIDE 'N TOUCH



TNTY's newest development is revolutionizing the experience of waterslides by offering a competitive, interactive game for guests as they shoot along their watery journey. The attraction not only guarantees fun for riders but also can act as a marketing vehicle. Additionally, the cost of the interactive elements is not more than 5 – 7 percent of the slide's total investment cost while potentially increasing guest turnover by 50 percent.

Each guest's mission is to collect more points than his or her competitors. Bright 5.51-inch (14-centimeter) -diameter RGB LED panels create eight different figures and sounds in eight different colors. Every combination is worth different point amounts. Guests touch the panels as they slide by to earn points. At the end of the slide, a display shows how many points guests collected and the timing and speed of their journey. To encourage increased ridership, a bonus figure appears every 1,111th touch and earns guests an extra 50 points when they encounter it. Social media experience may also be integrated.





SPLASH BUCKET

HEAD TO HEAD COMPETITION AT STUNING INTERACTIVE SPLASH CHALLENGE

Splash Bucket is an one to one interactive splash game to see who has the fastest reaction. Players must tap the lit buttons as fast as when lights appear. Each player aims to beat their competitor to splash them by nozzles embedded on the modules during game and also by water splash at the end of the game.

HIGHLIGHTED FEATURES

- ⊗ Availability of single gaming module and double gaming modules
- ⊗ Against time & Score collection game mode options.
- ⊗ Ability for head to head battle by playing simulatenously.
- ⊗ In game variable levels of difficulty.
- ⊗ Water shooters embedded on the modules.
- ⊗ Sound effects available.
- ⊗ Easy to Play & Plug'n to Play features.
- ⊗ Slim & Unique design.
- ⊗ Various color combination options.
- ⊗ Availability of different module theming.





ELECTRONIC ACCESSORIES

TRAFFIC LIGHTS

The elegant appearance of our traffic-light board can fit into any surrounding, even existing slides' environments. The outside section of the traffic light is available in unlimited colors, while the screen's extra-bright contrast clearly displays scores even in bright daylight using your choice of eight different colors — even matching the color theming of your slide. The size of the device is 11.73 x 6.69 inches (298 X 170 mm), and the size of the screen is 10.12 x 5.08 inches (257 X 129 mm).

The device alerts guests to begin racing using light flares and optional sound signals for added safety.

The red-green light flare is available in four different animations:

- A "Formula 1" style start, with light bars appearing in five cycles
- Horizontal red-green light flares in red-green lines
- Perpendicular red-green light flares in lines
- Red-green light filling the entire screen

The Splashware Multifunctional Start-Stop System acts as an easy-to-view communications vehicle for all types of messages. When riders are competing, scores can be displayed. Between times, the screen can deliver marketing messages — easily changed and edited using an Internet connection and a browser-based admin page — allowing it to pay for itself in a year or less.

PHOTO SYSTEMS

This high-resolution system takes action photos of visitors as they travel through a slide, even taking into account privacy rights so that only guests can view their own photos. The process works by having guests identify themselves in the SplashCube at the beginning of the slide. Then, at the end of the slide, a water- and weatherproof photo terminal displays the guest's image after he or she scans an RFID or barcode. Guests can modify or change the background of the photos as desired. The speed and time can also displayed on each picture. Pictures can be purchased as printed (on paper, mugs, t-shirts, etc.) on site at the arrival or registration terminal, using a high-quality dye-sublimation printer, or purchased in digital version on pen drive. Online sales are an additional option using SplaShare official site. Similarly, after purchase, guests can share their photos via social media.

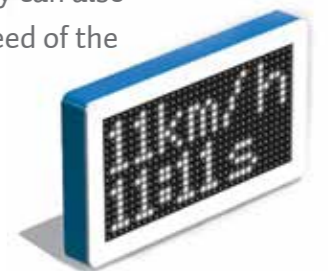


SPLASHCLOCKS

The SplashClock has a modern, clean format with a 19.68 x 19.68 inch (50 x 50 cm; 64 x 64 pixel) display that fits easily into any environment with its water- and weatherproof exterior. It can even have any custom design, logo or remark. A bright RGB LED display shows an analog or digital clock, the date, other data (such as air and water temperature, humidity and wind speed) and any other information you want to communicate from useful messages to advertisements. The ability to deliver ads means the device can pay for itself in a short time frame. Users can configure the system via Ethernet network, and the configuration interface can be accessed via web browser or mobile application. Any problems you may experience are quickly and efficiently solved by Polin's R&D team via remote access and the DCF77 receiver ensures that the device always delivers accurate time.

SPEEDOMETERS & SCOREBOARDS

The Splashware Speedometer System measures speed and time of riders' journey using built-in sensors. Guests can review their results on an LED display, which has a special high-intensity brightness so it is easy to read even in bright sunlight. LED display may be customized with any theme or color. The ScoreBoard is available in five sizes from 10.12 x 5.08 inches (257 x 129 mm) to 30.24 x 10.18 inches (768 x 258 mm). The display can also be programmed to show other messages: time (in millisecond accuracy) and speed of the current slide; time and speed of the previous slide; and best time and speed. Users can also program in additional text including advertisements.



KIOSKS & TERMINALS

TNTY's new-generation kiosks and terminals allow guests to log in, log out, share scores, photos and more.

HIGHLIGHTED FEATURES

- ⊗ Various theming options
- ⊗ Suitable for indoor or outdoor use
- ⊗ Keyboard, mouse and touch-panel options
- ⊗ Plug & Play system available for the existing parks



SPLASHARE – THE VIRTUAL CENTRAL CORE OF THE SPLASHWARE SYSTEM

An experience for your guests – An advertisement OPPORTUNITY for you!

Based on our continuous development practices, we can now offer the SplaShare System and related products to the online world. This system is the only cloud-based

system in the world specially designed for the aquatics and waterslide industry. It offers parks the possibility of collecting guests' points and then delivering the information to remind them of the excitement of their competition. Continuous reminders will encourage guests to return again and again to improve their scores and track how many miles/kilometers they have traveled in their sliding competitions. After a facility registers on the SplaShare official website, it constantly receives product-related statistics containing its guest details for use in enhancing its marketing strategies. After guests register, they can follow their results, see their own photos and share that information via social media.

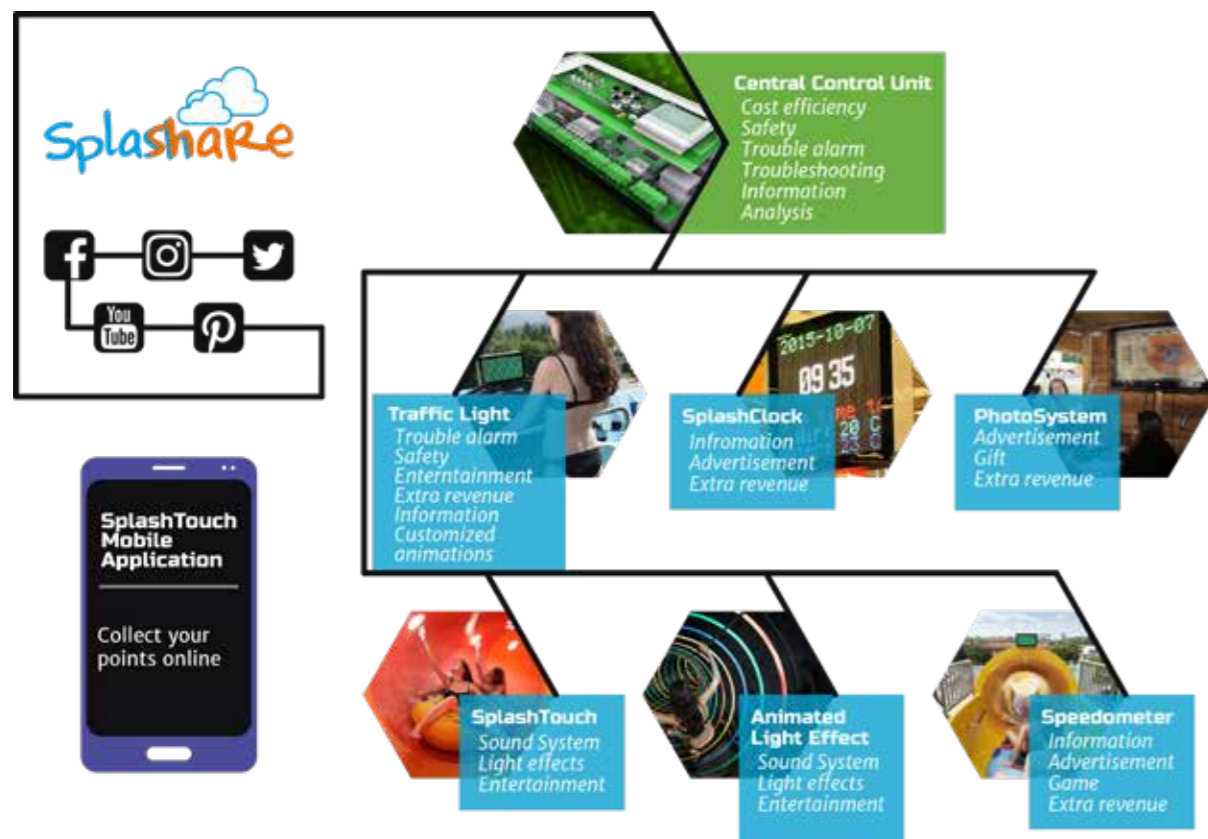


MOTION-SENSITIVE AUGMENTED-REALITY WATERSLIDES

Using augmented reality, Polin now offers a truly unique experience for users of its special closed slides, such as Spheres, Space Shuttles and Magic Sphere. Video mapping and holographic-imaging technologies can turn the dark and misty atmosphere of these special slides into completely different worlds.

HIGHLIGHTED FEATURES

- The possibility of playing motion pictures in each space
- The option of motion-sensitive functions
- 3D holographic-image applications





ROCKET LAUNCHERS

Ready to release yourself?

The thrill of this ride comes via genuine free fall that guests experience via ultrafast-opening trap door that delivers 100-percent safe operation.

Unique features of the Rocket Launcher system include:

- ⊗ A new-technology hydraulic-hybrid system
- ⊗ Soft ramping in the start and stop of the trap door's opening movement
- ⊗ No overload on couplings
- ⊗ Remote access 24 hours a day, seven days a week and 365 days a year
- ⊗ Maintenance-free close-loop hydraulics
- ⊗ A new 2000 Nm electro-mechanic brake system



PARK MISSION GAMES

Parks can now create their own exclusive games in partnership with Polin through the use of RFID (or barcode) wristbands. Guests who choose to join the adventure must complete a sequence of missions to win prizes, allowing parks to specifically manage guests' circulation within the park.

For example, guests can be directed to:

- ⊗ Queue up for certain waterslides in a specific order
- ⊗ Find hidden treasures throughout the park
- ⊗ Achieve set point totals in Interactive Game Cabins

After reaching a certain level of points, guests can win for bonus prizes (such as free drinks, meals or free admission to special events).

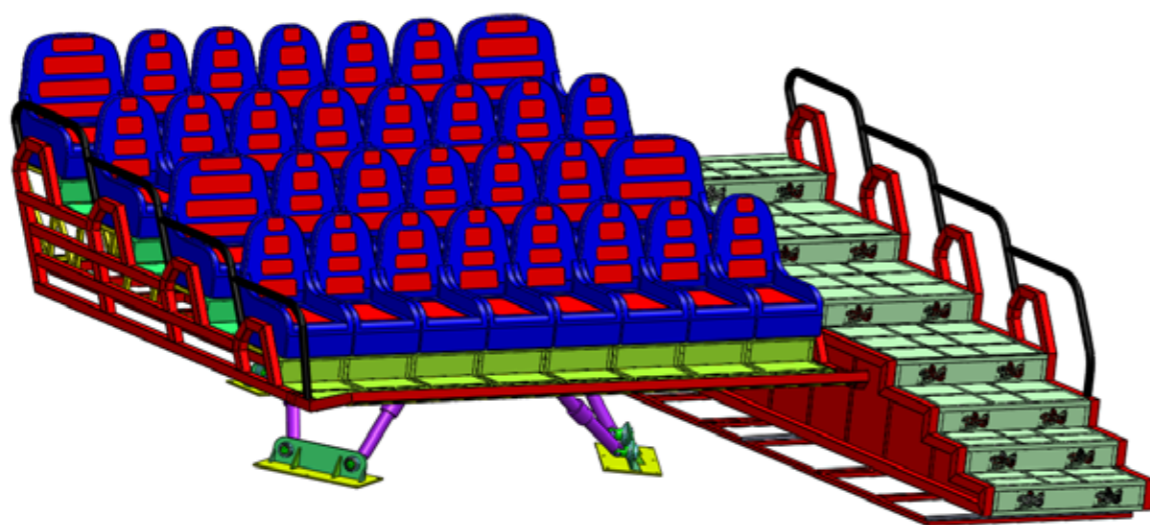


OCEAN RIDE SIMULATORS

The Ocean Ride Simulator is a special kind of 4D cinema experience.

HIGHLIGHTED FEATURES

- ⊗ Movies created using 4K real 3D underwater cameras
- ⊗ Developed over eight months by expert crews from all over the world
- ⊗ Postproduction delivered by Chroma TV, producer of “Game of Thrones”
- ⊗ The opportunity to experience the underwater world from a submarine
- ⊗ Whole new realms of action-packed 4D adventure, from the warm waters of the tropics to the icy Antarctic, from the history of First World War wrecks to gliding alongside great white sharks
- ⊗ An experience a family can enjoy together
- ⊗ Chairs synchronized to move along with the movie, such as riding a roller coaster
- ⊗ 34 seats on one platform
- ⊗ Real wind, bubbles, water and air effects synchronized with the movie



SUBMARINE SIMULATORS

The “World of the Undersea” is a children-oriented education project created by expert event-entertainment teams and designed to create an atmosphere in which children can learn and have fun while pretending to ride in a submarine.

The experience recreates life under the sea by incorporating a special underwater movie that includes a variety of sea creatures.





ABOUT US

TNTY Waterparks was founded in Istanbul, Turkey, in 1976. Current headquarters for our 35,000-square-meter plant is in Dilovasi, Turkey. It is the largest waterslide manufacturing plant of the World.

Our vision is to be the leading company in the worldwide waterparks sector. To achieve that goal means being deemed No. 1 by our partners, customers, colleagues and employees based on our proven excellence, expertise, credibility and quality.

Our mission: To contribute to the development of the aquatics industry by continuously leading improvements in the sector. We are determined to supply the highest-quality and most innovative products and services at convenient prices. We strive to progress beyond the expectations of our partners and customers and continuously increase our production and export volumes.

With 42 years of global experience in the composites sector, we have developed an unmatched expertise in both business and technology. Our successful completion of more than 3,000 projects — of different sizes and complexity and in 105 countries around the world — continues to build our wealth of experience.



TNTY GameTechnologies