

TNTY WATERPARKS  
INTRODUCES



WORLD'S FIRST FAMILY BOWL RACING SLIDE

EXPERIENCE THE ADRENALINE  
RUSH OF COMPETITION





## SPACE RACE: WORLD'S FIRST FAMILY BOWL RACING SLIDE

The anticipation and energy that TNTY Waterparks commits to satisfying clients has never wavered over 40 years of doing business. Dedicated to innovation, quality and technology and passionate about design and engineering, we've grown from a family company into a global leader with more than 2,500 waterpark projects in 100 countries worldwide. We're proud to offer the industry's widest range of waterpark attractions.

Our pioneering technologies and ground-breaking designs mean we are trusted suppliers to some of the world's biggest, most award-winning waterparks. We understand that each and every element within our clients' parks matters, and our thrilling waterslides help break attendance records for them all over the world.

Game-changing innovations - such as our landmark King Cobra waterslide and our use of L-RTM (Light Resin-Transfer Molding) technology in waterslide manufacturing - have set new industry benchmarks for creativity and excitement. Even so, we are steadfast in raising the bar and continuing to provide the best-quality products and services by investing in continuous research and development.

You are invited to experience. The TNTY Experience.

TNTY Waterparks  
The Experience.

# ABSTRACT

This marketing collateral fully explains all features, technical specifications and benefits of the SPACE RACE waterslide, which is a family bowl racer waterslide with a unique platform that is designed for racing two four-person, round, family-style rafts.

Keywords: #SpaceRace #HighCapacity #NaturalLightEffects #SlideNRoll  
#FamilySlide #BowlSlide #RacerSlide #SpecialPatternEffects #ResinTransferMolding



## THE SPACE RACE<sup>®</sup> THE FUTURE OF THE WATERSLIDES

Every waterslide we design begins with the belief that it should be more than just a compilation of features. Instead, we look at it from the perspective that it should be seriously simple in delivering fun yet entirely revolutionary in broadening the industry's horizons; to go beyond the routine.

A new waterslide's structure and technology should be designed and engineered to work together and improve on one another. We believe that's the only way to create a waterslide that is balanced and congruent.



## A Game Changer

Space Race is an advanced waterslide that delivers a uniquely competitive riding experience. Its invention fulfills a life-long dream of our company: To give guests the experience of competing in a true, real-life race with other riders within a bowl slide. The result of our efforts has been the creation of the first slide of its kind in the world.

Engineering this ride meant approaching every element differently to ensure our design was not only revolutionary and breathtaking but also practical. We succeeded and developed a unique, streamlined design, distinctive entry tower and quadruple rafts. It is completely accurate to state that no ride exists that is quite like Space Race.



Just as we have from day one in starting our company, we remain deeply passionate, determined and inspired to create and deliver amazing experiences for our guests. And, as mentioned, we continue with a focus on always improving on our creations - to strengthen the connection between thrills and fun - to create delightful and gripping memories for our clients' guests.

**That's how we flow.**

## WHY THERE'S NOTHING QUITE LIKE SPACE RACE<sup>®</sup> ?

Space Race is a unique slide that provides new racing capabilities to the family-slide category. It is designed for racing two round family-style rafts holding four people each (resulting in eight simultaneous riders). The rafts enter the bowl into two tubes, each on opposite sides of the top level of the entry tower. Over the course of the ride, the riders can reach speeds of more than 24-27 miles/hour (39-43 kilometers per hour). The race begins immediately as the rafts enter the bowl's perimeter and follow two identical helical routes around its interior - separated by a patent-pending dividing wall; racing to the center of the bowl.

The bowl is purposefully designed so that the two racing teams can easily see each other as they travel the bowl's interior to increase the competition and their adrenaline levels. The rafts exit the bowl at its center, heading in opposite directions before the sliding adventure ends into two separate - and still identical - dry or pool landings.



## BENEFITS AND CHARACTERISTICS

The Space Race introduces a whole new opportunity for fun by providing groups of riders a chance to compete as they urge their teammates to be the fastest in crossing the finish line. The slide pits two four-rider family rafts against each other. The rafts enter the bowl from opposite directions at a speed of more than 43 kilometers per hour (27 miles per hour).

Separated by a patent-pending divider, the eight riders follow identical helical routes, starting at the perimeter and ending at the center of the bowl. The giant specially designed basin allows the racing teams to see each other as they careen around the bowl, providing incentive for them to lean, bend, crouch and tilt in every way possible to give them an advantage in increasing their speed to gain an edge over their opponents.

Eventually, the teams exit the bowl at the center, shooting in opposite directions as they finalize their sliding adventure via two separate but identical dry or pool run-outs.



## Towering above all the rest

Another distinctive characteristic of the Space Race is its entry tower. Riders begin building their adrenaline rush even before they step into their rafts due to the tower's design. It allows all riders to see other teams competing against one another as they wait their turn to enter the race. As they view other riders, they can start to develop their "secret" competitive advantages for racing through the 218 meter (715 foot) attraction's slide path.



Once they reach the top, riders face the exact same challenge as their opposing team, providing a rush as they speed through every twist and turn while safely separated from collisions. In the end, riders can congratulate one another as the winner is announced.



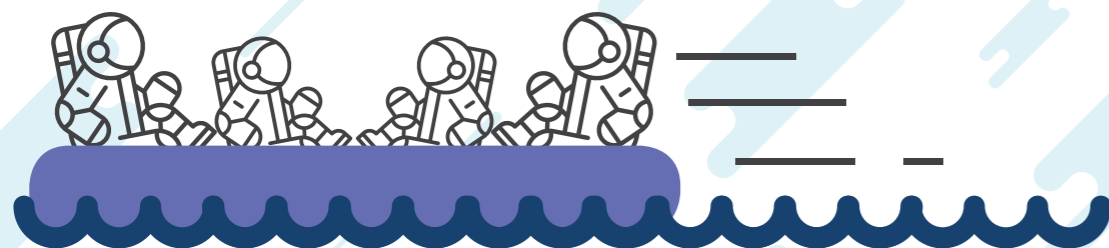
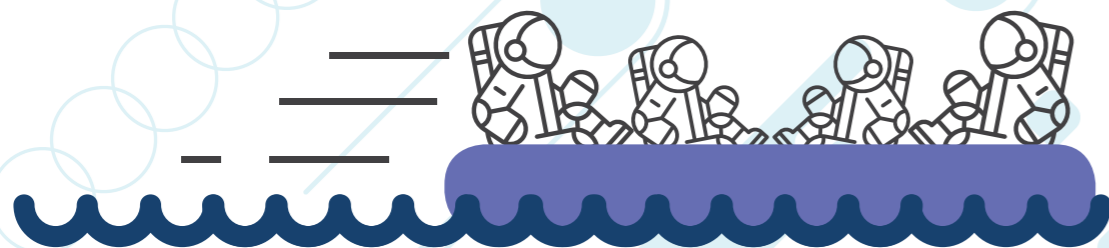
## Product Features

- ❑ Maximum capacity (120 x 8 riders per hour)
- ❑ Optional "Natural Light Effects" (which allows the sun's rays to stream into the tube via translucent stripes to create a different experience on every ride)
- ❑ Slide 'N Roll" and "Special Pattern Effects" (which allow a variety of theming and patterns on the slide's surface)
- ❑ Unique tower centered between the two raft entry points
- ❑ A "shared" slide experience with others in the queue
- ❑ A distinctive, attention-grabbing appearance with the attraction's massive size
- ❑ Exclusive options when combined with other slides via specialty design considerations offered in consultation with Polin Waterparks' design team professionals
- ❑ Translucent applications
- ❑ A 13/20 percent slope
- ❑ Resin-transfer molding (RTM) technology to create perfectly smooth, shiny slide components with zero rough edges and perfect component alignment
- ❑ Space requirements of 20 meters high and 66 meters by 52 meters wide (65 feet high and 216 feet by 170 feet wide)
- ❑ Bowl size of 5 meters (16 feet) high by 26 meters (85 feet) deep by 26 meters (85 feet) wide and an angle of 15 degrees

## TECHNICAL SPECIFICATIONS

Slope	13/20%
Max. Capacity	120x8 riders per hour
Tubes	Family (round raft)
Length of the Slide	218 m (715 ft) * 2 path
Speed	12 m/s - 43 km/h - 27 mph
Special Effects	"Natural Light Effects" (allowing the sun's rays to stream into the tube via translucent stripes to create a different experience on every ride), "Slide 'N Roll" and "Special Pattern Effects" (which allow a variety of theming and patterns on the slide's surface)
Exit	Pool or Run-out
Component Materials	Resin Transfer Molding (RTM), a closed-molded technique that allows both sides of each component to be smooth and shiny with a gelcoat finish.
Entry	Unique tower centered between two raft entry points.

PCT Application No: PCT/TR2016/050221  
 US Design Patent Application No: 29/534535  
 Industrial Design Registration No: 2015 02455



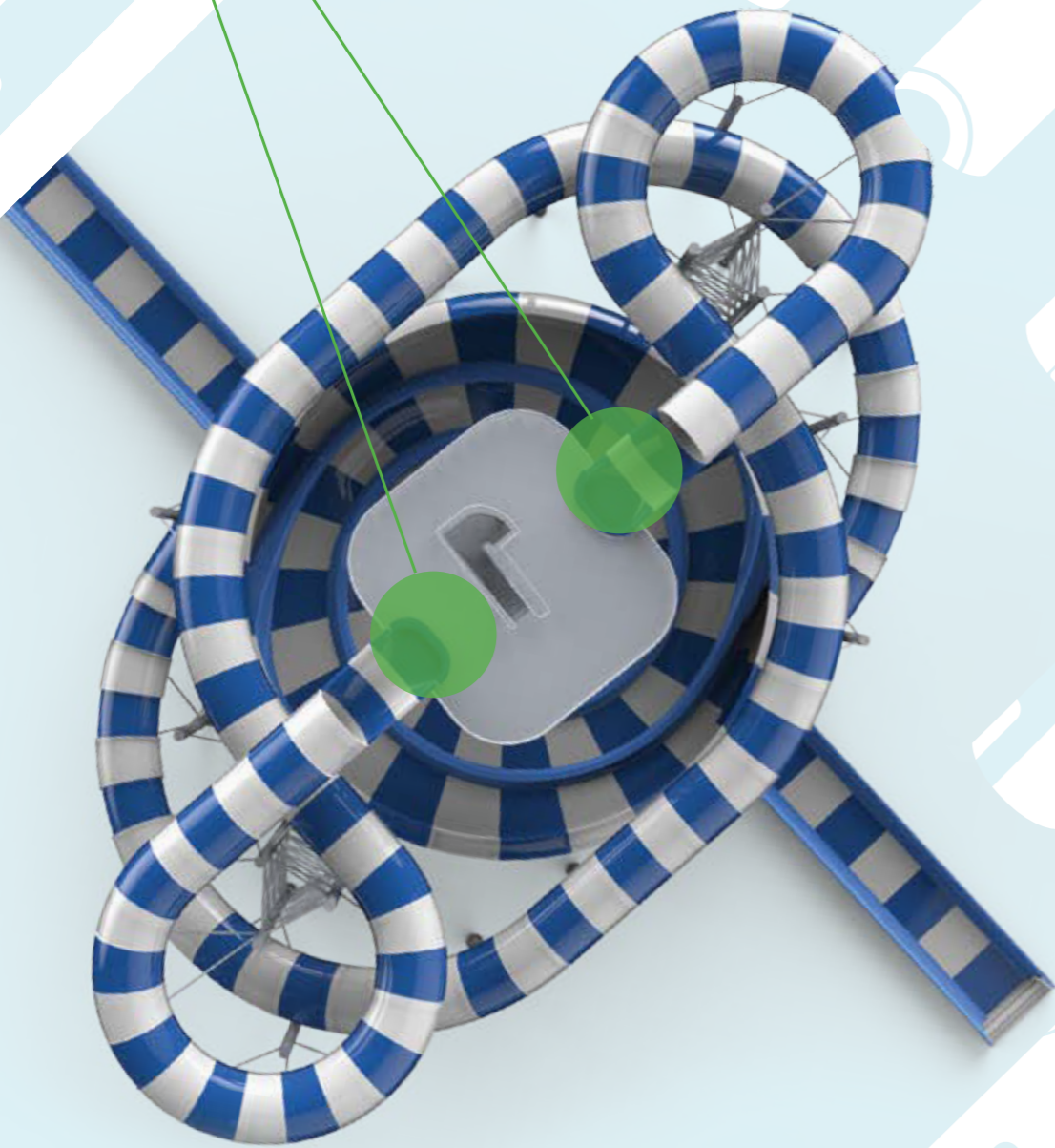
HIGH CAPACITY  
120 X 8 RIDERS PER HOUR





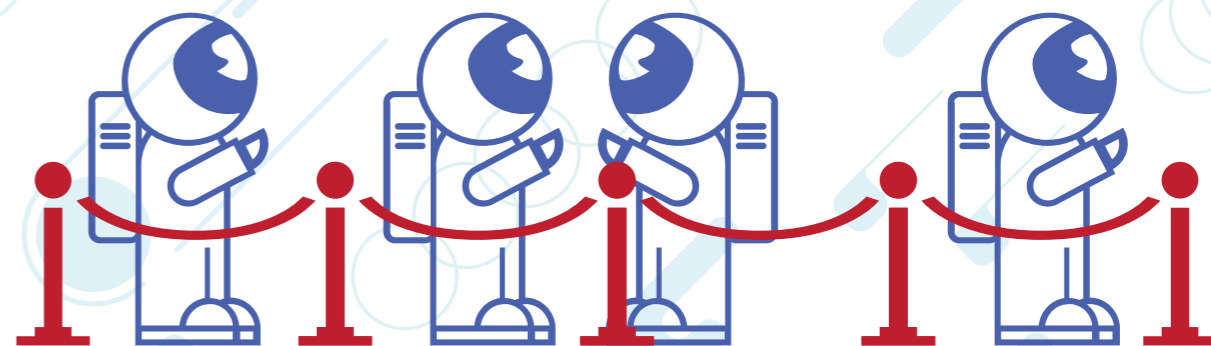


UNIQUE TOWER CENTERED BETWEEN  
THE TWO RAFT ENTRY POINTS

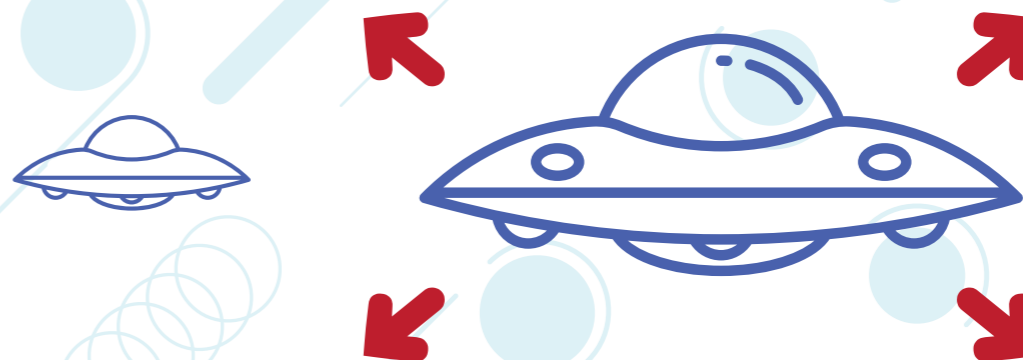




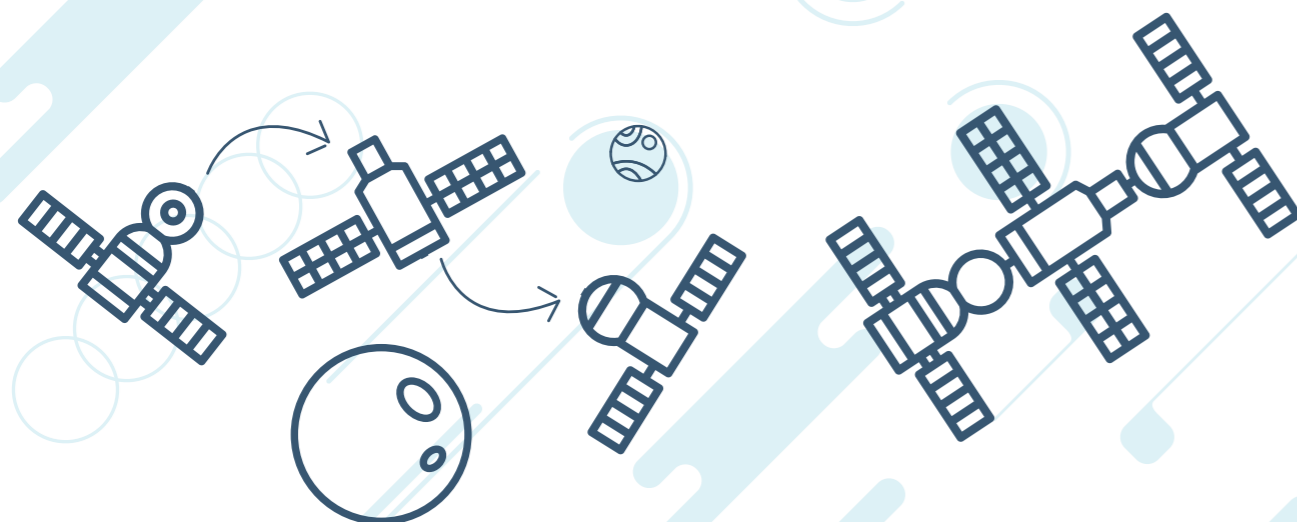
A "SHARED" SLIDE EXPERIENCE  
WITH OTHERS IN THE QUEUE



A DISTINCTIVE, ATTENTION-GRABBING APPEARANCE  
WITH THE ATTRACTION'S MASSIVE SIZE  
(ICONIC DESIGN)

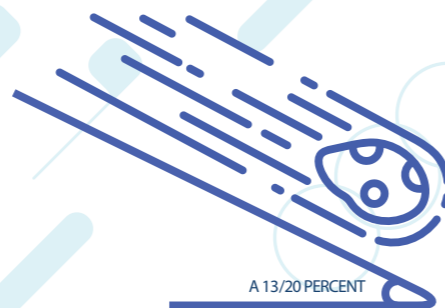


EXCLUSIVE COMBO OPTIONS WHEN COMBINED WITH  
OTHER SLIDES VIA SPECIALTY DESIGN CONSIDERATIONS  
OFFERED IN CONSULTATION WITH TNTY WATERPAKS'  
DESIGN TEAM PROFESSIONALS



TRANSLUCENT APPLICATIONS

A 13/20 PERCENT SLOPE





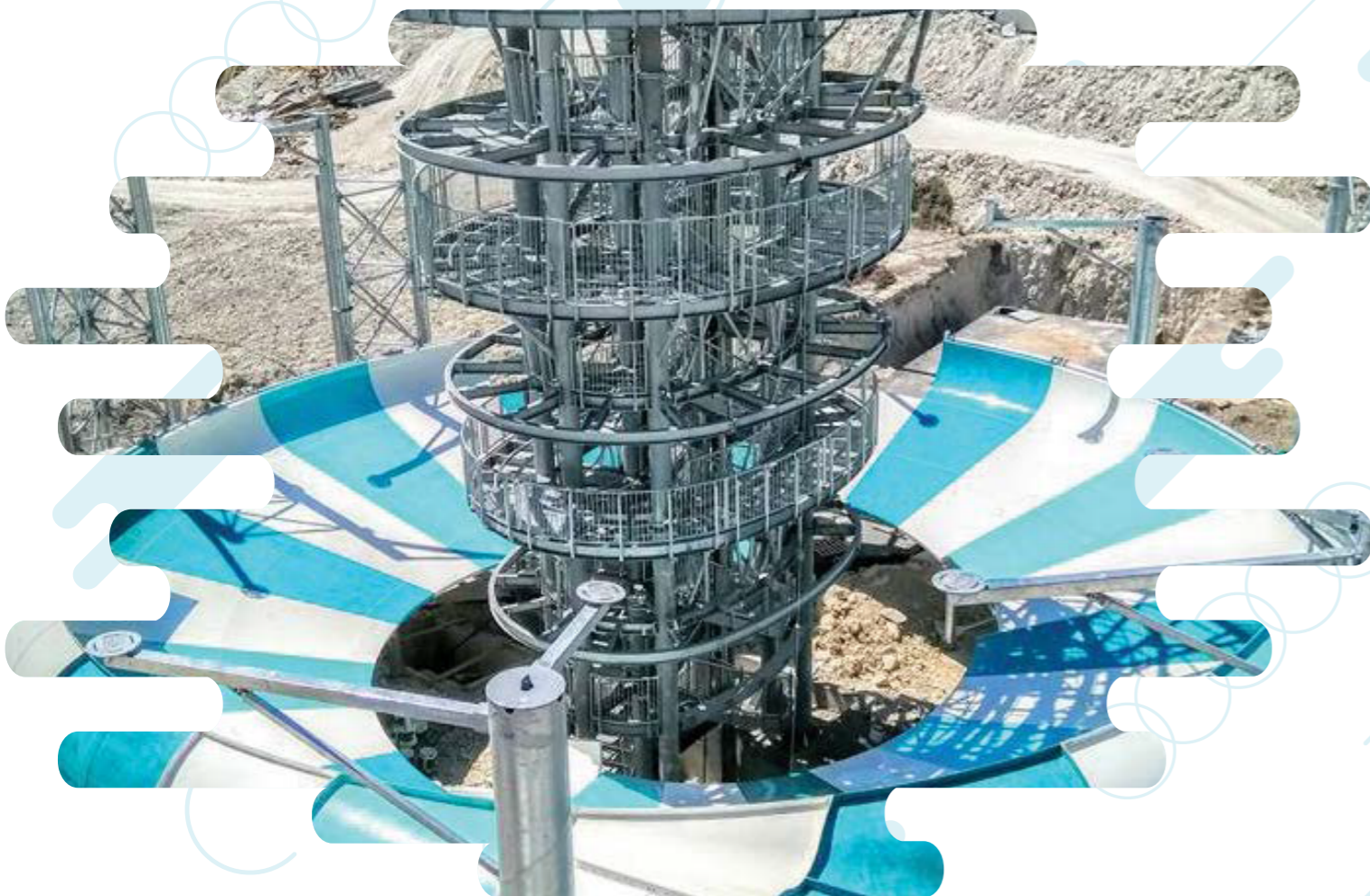
RESIN-TRANSFER MOLDING (RTM) TECHNOLOGY TO CREATE PERFECTLY SMOOTH, SHINY SLIDE COMPONENTS INSIDE AND OUTSIDE WITH PERFECT COMPONENT ALIGNMENT.



SPACE RACE WATERSLIDE IS MANUFACTURED WITH RTM TECHNOLOGY.



SPACE REQUIREMENTS OF 20 METERS HIGH AND 66 METERS BY 52 METERS WIDE (65 FEET HIGH AND 216 FEET BY 170 FEET WIDE)

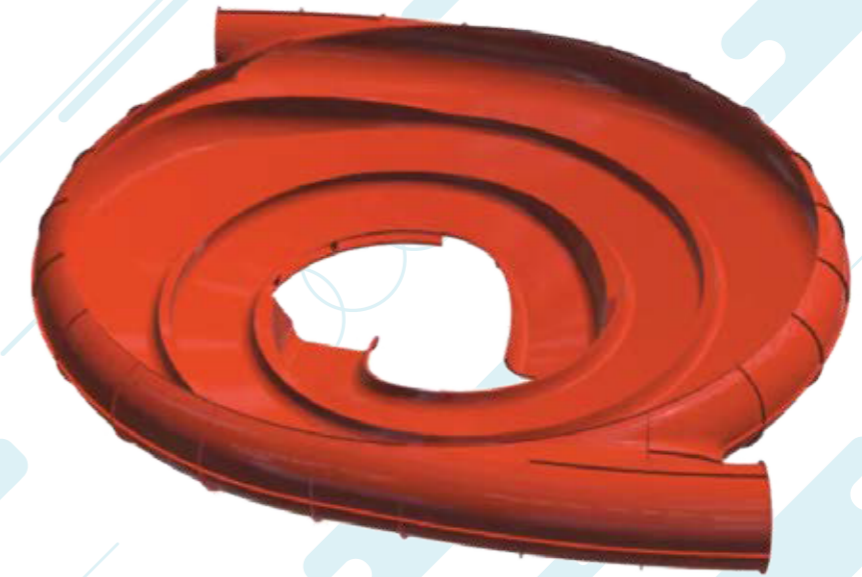


- Ø A “shared” slide experience with others in the queue.
- Ø A distinctive, attention-grabbing appearance with the attraction’s massive size and iconic design.
- Ø Exclusive combo options when combined with other slides via specialty design considerations offered in consultation with TNTY Waterparks’ design team of professionals.
- Ø Resin-transfer molding (RTM) technology to create perfectly smooth, shiny slide components with zero rough edges and perfect component alignment.

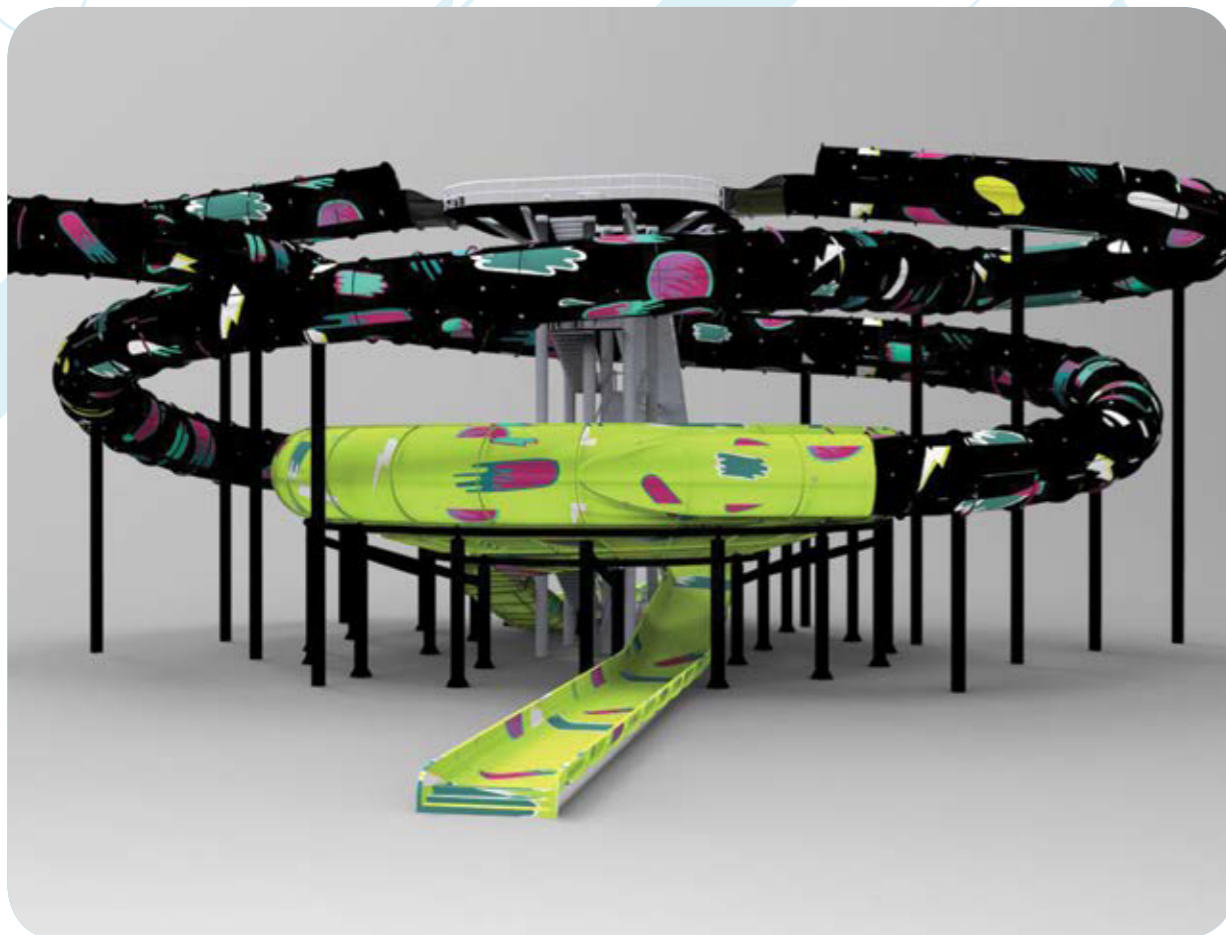
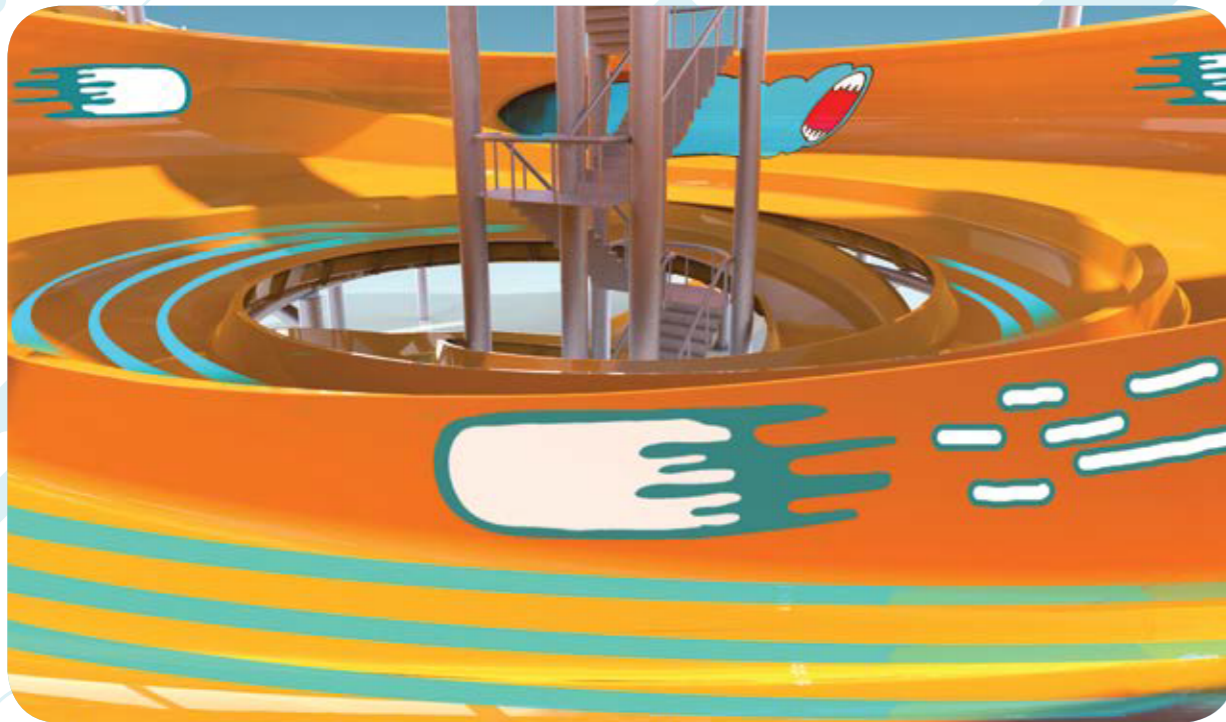




BOWL SIZE OF 5 METERS (16 FEET)  
HIGH BY 26 METERS (85 FEET) IN DIAMETER AND  
AN ANGLE OF 15 DEGREES



THE SPACE RACE ® THEMING OPPORTUNITIES



THE SPACE RACE ® THEMING OPPORTUNITIES





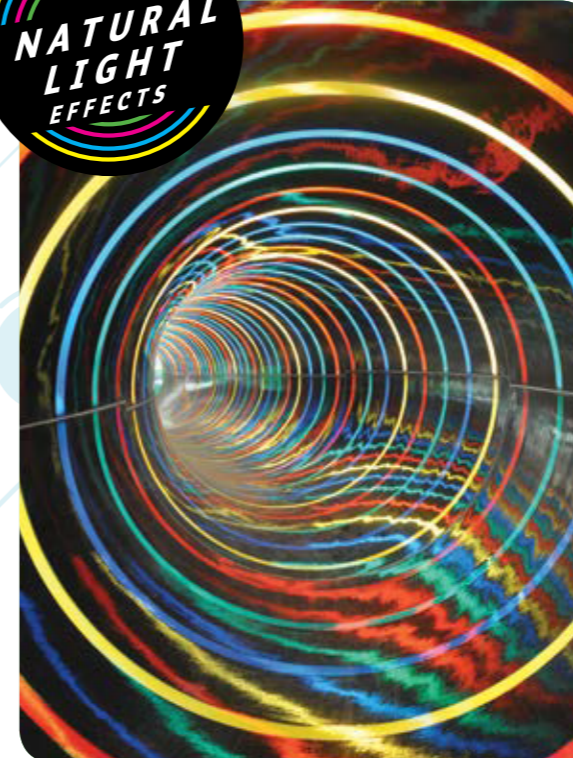
**L-Resin Transfer Molding (L-RTM):** L-RTM is the latest, leading technology in composites production. TNTY Waterparks' has been the pioneer in L-RTM waterslide manufacturing and is currently the sole producer offering its all line with this production technology. The primary advantage of L-RTM is that it allows to create each of waterslide component with both a shiny, smooth, appealing interior and exterior. The technique also allows for stronger yet lighter waterslides that are easier to install. The brightness and smoothness of the outer surface facilitate its usage. Because the surface is smooth, it doesn't get dirty quickly and is easier to clean. Storm Racer Waterslide features L-RTM technology.



**Slide'n Roll Technology:** With TNTY Waterparks' new Slide'n Roll technology, its waterslide modules essentially become giant, passive speakers that naturally amplify sound through the entire tube due to the company's innovative incorporation of tactile transducers into the systems. Also known as bass shakers, these devices transmit a low-frequency vibration onto a surface-in this case, Polin Waterparks' waterslide tubes - so that the vibrations turn into sound and can be heard by riders as they travel through the slide. The unique translucent patterns go together with the music. Storm Racer waterslide may feature this unique application to enhance the experience.



**Special Pattern Effects Technology (SPE):** TNTY Waterparks enhances the slide experience through the incorporation of a special manufacturing technology that is applied on the outer surface of the ride. These patterns can be of any design, shape, theme. On a final note, this is gel-coated, not painted afterwards. The Storm Racer Waterslide may feature Special Patterns Effects Technology in accordance with the parks' theming.



**Natural Light Effects Technology (NLE):** Polin Waterparks' patented NLE technology relies exclusively on the benefit of the sun's natural light and is incorporated directly into the composites of the slides' components. As water flows through these components, it interacts with the sunlight to create glowing, colorful designs to riders as they slide through. Then, as the angle and strength of the sun changes throughout the day, the interior designs change and adapt to continually create a harmonious and magical appearance. The tunnel part of the Storm Racer Waterslide features NLE technology offering great visual experience.

Discover the next generation of waterslides and more versatile waterslide components, please contact us [info@aquaticplayequipment.com](mailto:info@aquaticplayequipment.com) for further information.



## CONCLUSION

TNTY Waterparks is recognized in the industry for being a pioneer in introducing new products before anyone else. Our company doesn't just create products; we create the kind of experience that has influenced the entire waterpark industry.

Familyslides have always been an important part of the waterslide world. This is primarily due to the time together and share the experience. That benefit for families and friends to enjoy is an important one for operators, too. The more people who can ride a slide simultaneously, the better a facility is able to manage its queues. That makes high-capacity rides of increasing importance.

But moving people through queues is only a part of family rides' advantages. Parks also want to deliver experiences that provide guests with a thrill, then, giving families and friends one more reason to spend a day "on the water." That makes bowl slides a must-have attraction for all waterparks. And TNTY Waterparks' Space Race meets - and exceeds - all of these requirements.

With the introduction of the Space Race waterslide, TNTY Waterparks offers the waterslide industry a family bowl slide (with high capacity) and a competitive racing thrill and great spectator appeal for those in the central tower. The geometry of the slide is also like no other waterslide. These elements create a ride that is truly unique and a pioneer among rides in the waterpark world.

